

Tree Clearing and Landscaping Plan
DOT Project # 102-295
Norwalk, CT
9/13/2022

Area will be cleared
then reforested when
construction is
completed

LEGEND


MAINTAIN EXISTING

TREE CLEARING


RESTORATION
(LOW NATIVES)

INVASIVE SPECIES
MANAGEMENT

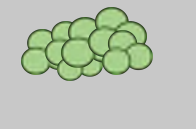
REFORESTATION



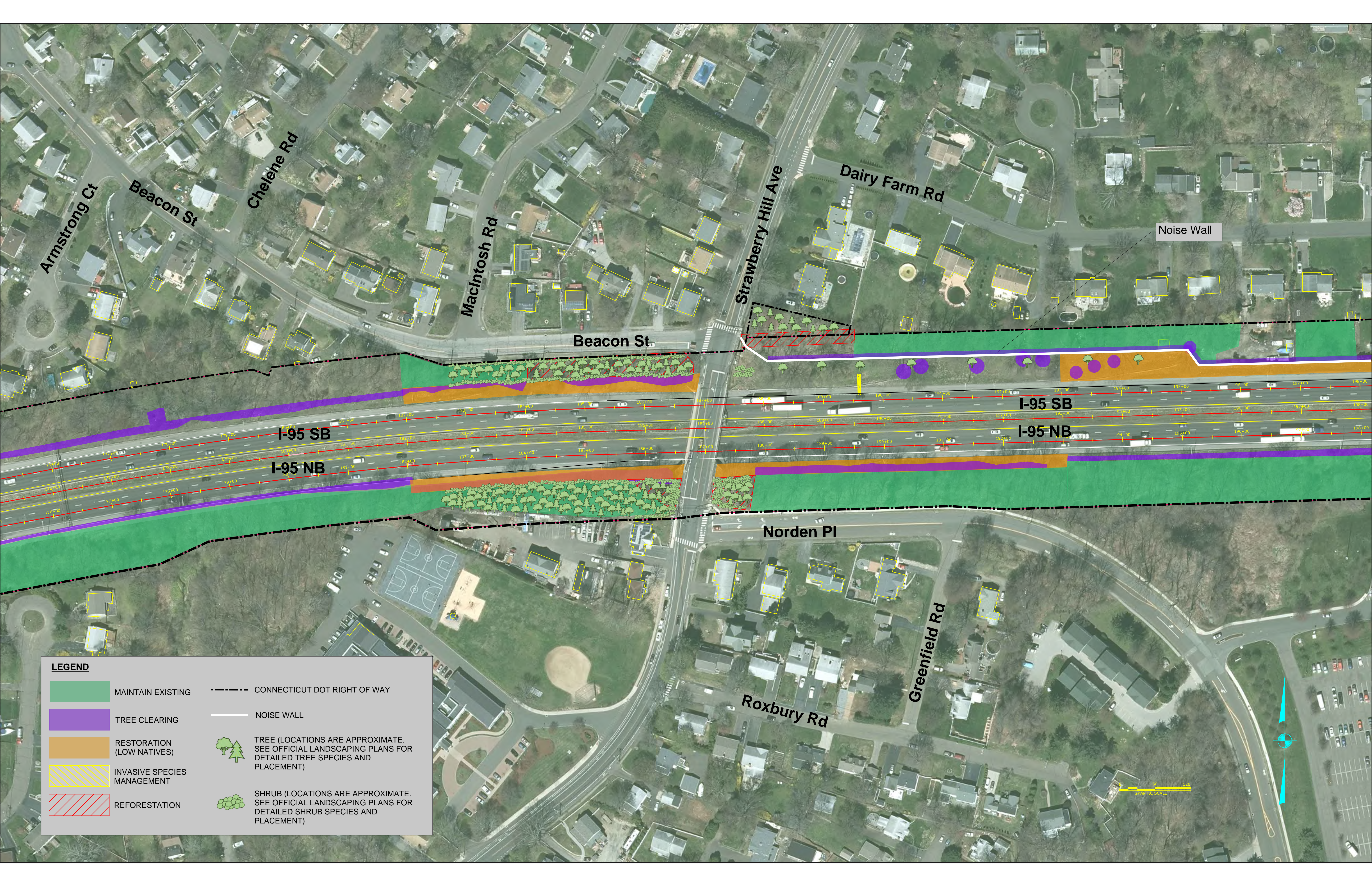
CONNECTICUT DOT RIGHT OF WAY



TREE (LOCATIONS ARE APPROXIMATE.
SEE OFFICIAL LANDSCAPING PLANS FOR
DETAILED TREE SPECIES AND
PLACEMENT)



SHRUB (LOCATIONS ARE APPROXIMATE.
SEE OFFICIAL LANDSCAPING PLANS FOR
DETAILED SHRUB SPECIES AND
PLACEMENT)



MAINTAIN EXISTING

TREE CLEARING

RESTORATION
(LOW NATIVES)

INVASIVE SPECIES
MANAGEMENT

REFORESTATION

CONNECTICUT DOT RIGHT OF WAY

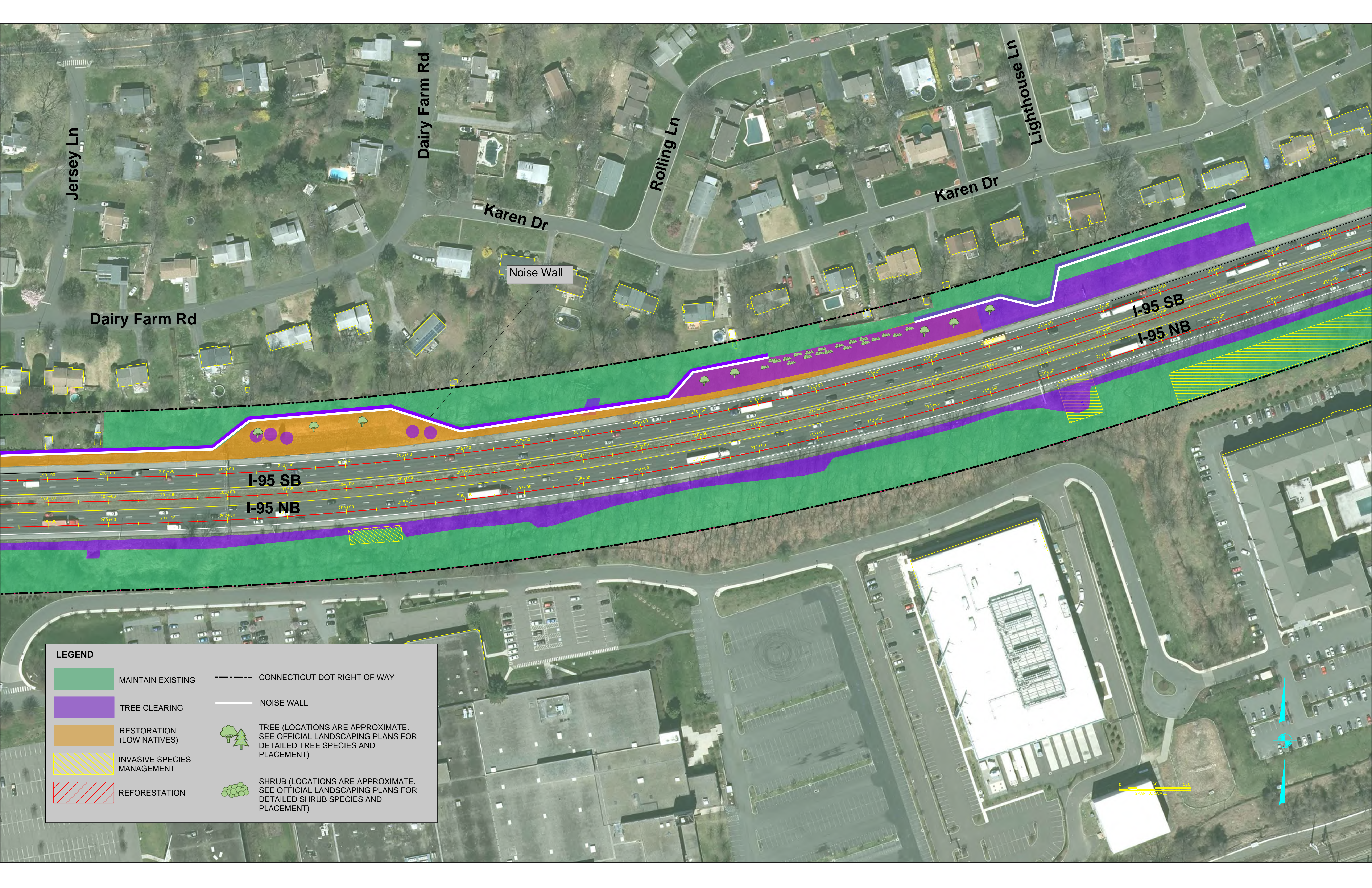
NOISE WALL

TREE (LOCATIONS ARE APPROXIMATE.
SEE OFFICIAL LANDSCAPING PLANS FOR
DETAILED TREE SPECIES AND
PLACEMENT)

SHRUB (LOCATIONS ARE APPROXIMATE.
SEE OFFICIAL LANDSCAPING PLANS FOR
DETAILED SHRUB SPECIES AND
PLACEMENT)

Noise Wall

GRAPHIC SCALE



LEGEND

MAINTAIN EXISTING

TREE CLEARING

RESTORATION
(LOW NATIVES)

INVASIVE SPECIES
MANAGEMENT

REFORESTATION

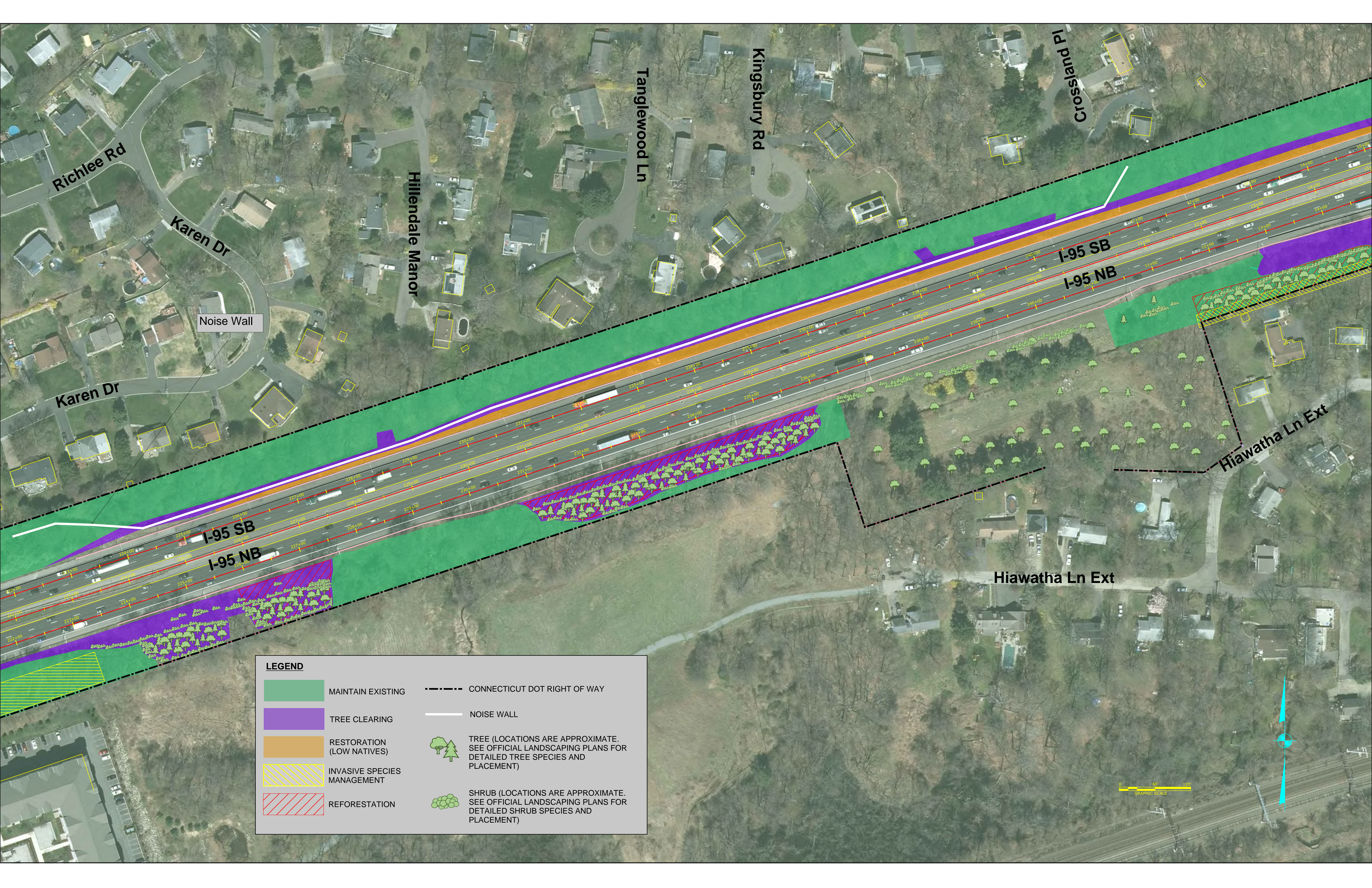
CONNECTICUT DOT RIGHT OF WAY

NOISE WALL

TREE (LOCATIONS ARE APPROXIMATE.
SEE OFFICIAL LANDSCAPING PLANS FOR
DETAILED TREE SPECIES AND
PLACEMENT)

SHRUB (LOCATIONS ARE APPROXIMATE.
SEE OFFICIAL LANDSCAPING PLANS FOR
DETAILED SHRUB SPECIES AND
PLACEMENT)

0 50 100
GRAPHIC SCALE



Richlee Rd

Karen Dr

Hillendale Manor

Tanglewood Ln

Kingsbury Rd

Crossland Pl

Noise Wall

Karen Dr

I-95 SB

I-95 NB

I-95 SB

I-95 NB

Hiawatha Ln Ext

Hiawatha Ln Ext

LEGEND

MAINTAIN EXISTING

TREE CLEARING

RESTORATION
(LOW NATIVES)

INVASIVE SPECIES
MANAGEMENT

REFORESTATION

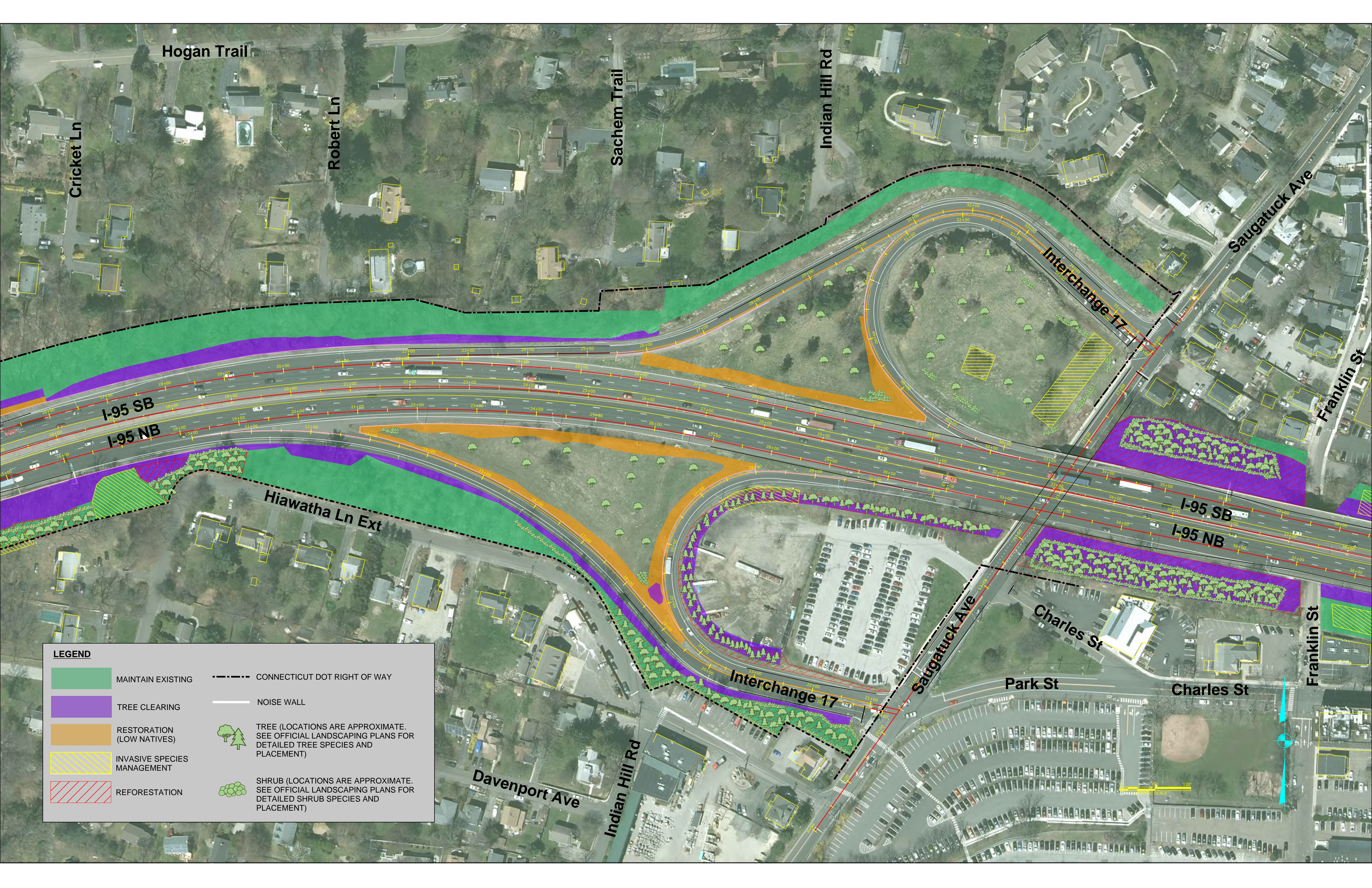
CONNECTICUT DOT RIGHT OF WAY

NOISE WALL

TREE (LOCATIONS ARE APPROXIMATE.
SEE OFFICIAL LANDSCAPING PLANS FOR
DETAILED TREE SPECIES AND
PLACEMENT)

SHRUB (LOCATIONS ARE APPROXIMATE.
SEE OFFICIAL LANDSCAPING PLANS FOR
DETAILED SHRUB SPECIES AND
PLACEMENT)





Hogan Trail

Cricket Ln

Robert Ln

Sachem Trail

Indian Hill Rd

Saugatuck Ave

Franklin St

I-95 SB
I-95 NB

Hiawatha Ln Ext

I-95 SB
I-95 NB

Charles St

Franklin St

Park St

Charles St

Davenport Ave

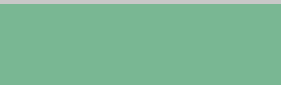

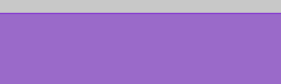





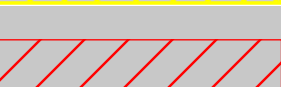
Indian Hill Rd

Saugatuck Ave

Interchange 17

Interchange 17

LEGEND

- | | | | |
|---|--------------------------------|---|---|
|  | MAINTAIN EXISTING |  | CONNECTICUT DOT RIGHT OF WAY |
|  | TREE CLEARING |  | NOISE WALL |
|  | RESTORATION
(LOW NATIVES) |  | TREE (LOCATIONS ARE APPROXIMATE.
SEE OFFICIAL LANDSCAPING PLANS FOR
DETAILED TREE SPECIES AND
PLACEMENT) |
|  | INVASIVE SPECIES
MANAGEMENT |  | SHRUB (LOCATIONS ARE APPROXIMATE.
SEE OFFICIAL LANDSCAPING PLANS FOR
DETAILED SHRUB SPECIES AND
PLACEMENT) |
|  | REFORESTATION | | |

SCALE 120'



Bridge St

Kechum St

Riverside Ave

I-95 SB

I-95 NB

Charles St

LEGEND



MAINTAIN EXISTING



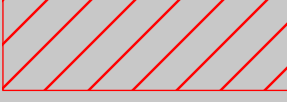
TREE CLEARING



RESTORATION
(LOW NATIVES)



INVASIVE SPECIES
MANAGEMENT



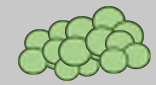
REFORESTATION

--- CONNECTICUT DOT RIGHT OF WAY

— NOISE WALL



TREE (LOCATIONS ARE APPROXIMATE.
SEE OFFICIAL LANDSCAPING PLANS FOR
DETAILED TREE SPECIES AND
PLACEMENT)



SHRUB (LOCATIONS ARE APPROXIMATE.
SEE OFFICIAL LANDSCAPING PLANS FOR
DETAILED SHRUB SPECIES AND
PLACEMENT)

